



# Archive One *for Exchange*

Control your data before it controls you

## Archive One for Exchange:

- ▶ Solves the headache of email capacity
- ▶ Discovers anything, anywhere, anytime
- ▶ Controls email through intelligent actions
- ▶ Provides fully automated mailbox quota management
- ▶ Offers advanced PST discovery & management
- ▶ Reduces downtime
- ▶ Increases efficiency of storage requirements
- ▶ Manages legal risks & compliance demands
- ▶ Removes the need for an external database
- ▶ Ensures mailbox privacy & integrity
- ▶ Enables access to archived email from anywhere

Archive One is more than just an email archive and search tool. In today's business world where 80% of communication is electronic, a more holistic view is required to meet the challenges of today and those of the future.

Archive One meets these challenges head-on by allowing you complete control over both live data and archived email data. Archive One removes all unwanted email and other data items from live Exchange Servers and also enforces corporate e-policies. It will search for that vital email with unlimited scope, reduce your Exchange store size, and improve backup/restore times.

Archive One can also help reduce the legal risk associated with email and comply with various regulatory requirements regarding the use and retention of email, such as Sarbanes-Oxley.



## Solve the headache of email capacity

Using your own email policy criteria, Archive One selects and archives email from mailboxes, PST files or public folders automatically and invisibly. The locations and retention periods of the archives are flexible and controlled by the system administrators.

Archive One maintains the integrity of archived messages seamlessly and provides users with direct access to their own archived information via a simple click on the item in their existing email client.

## Discover anything, anywhere, anytime

Archive One provides an unmatched ability to discover archived email and live Exchange data at a forensic level. Taking searching beyond simple date range, subject and recipient criteria, Archive One's forensic search functions allows you to define and match against over 50 criteria in any combination.

Without any archiving and indexing, all key email properties can be analyzed and with corresponding actions, can be executed to suit the discovery need. The power of this search capability enables the pre-sanitation/analysis of data without the requirement to commit data to an archive.

## Control email through intelligent actions

Through Archive One you can do more than just archive email, you can perform any number of intelligent actions to best suit your business needs. To ensure you have full control over all your email, intelligent actions can be performed on live Exchange data and on archived data and discovered PSTs:

- List:** Results are simply listed for further analysis
- Move:** Email can be moved to Public Folders, PSTs or a new mailbox
- Copy:** A copy of email can be placed in Public Folders, PSTs or a new mailbox
- Delete:** Whole email, message links or just attachments can be deleted
- Mail:** Results of a Forensic Search can be sent to the mail owners or a defined administrator
- Archive:** Email can be archived to storage devices with a cost profile that is in line with its corporate value
- Un-archive:** Email can be removed from the Archive and returned to its original location with full fidelity.

Intelligent actions allow unbounded flexibility in the management of the email data, making it easy for example to remove all email with MP3 files attached or a particular profile (such as a subject line, or attachment). This provides the ability to rationalize storage (before or after archiving) and reduce Total Cost of Ownership.

## Fully automated mailbox quota management

Email users gain the impression of an unlimited mailbox. They can just keep on saving their messages while, in the background, Archive One does its job of moving older or larger items onto lower cost storage, removing the hassle of mailbox maintenance such as choosing email for deletion.

## Advanced PST discovery & management

Often created to dodge mailbox quotas and then scattered around networks, PST files not only have practical limitations but can also contain messages and attachments which should really be part of the central information store.

Archive One makes it easy to understand the scope of your PST exposure by discovering all PSTs and associated information – size, owner, location and more, and allows you to manage them the way you want.

You can archive data directly from PSTs by-passing Exchange and user mailboxes. From just simple discovery to discovery with intelligent actions and through to full migration, you are in total control.

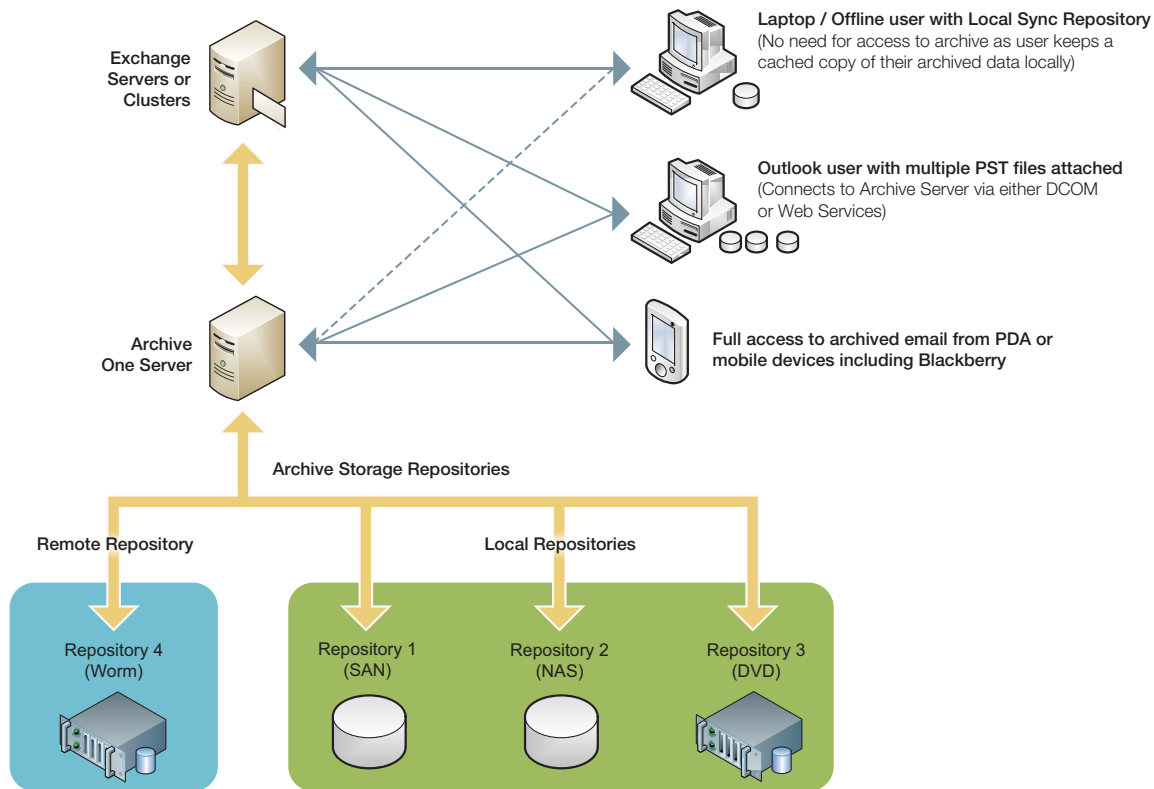
Even though PST processing may involve archiving all data, Archive One fully supports the ability to 'live' with existing PSTs. You can just search email content, report on size statistics, or even transfer email back to the server without archiving.

## Reduced downtime

Back up and restore times for the live data stores are improved immediately by reducing the amount of data held on the email server.

Service Level Agreements on critical email system restoration times are improved since the total size of the live email database is reduced and under control.

## Example Archive One for Exchange Architecture



### Flexible storage solutions increase efficiency of storage requirements

Archive One's pluggable Storage Managers store archived records into multiple repositories that can reside on any type of media and most vendor's storage devices. Archived email is compressed to save on storage space.

By archiving internal and external email to secure, indexed repositories, you can ensure you will be able to find critical message content rapidly and with full, demonstrable records of every email transaction suitable for audit requirements.

### Manage legal risks & compliance demands

To help you meet regulatory requirements such as Sarbanes-Oxley, ISO, HIPAA, Basel II and others, Archive One can extract and store a copy of every email sent or received.

By archiving internal and external email to secure, indexed repositories, you can ensure you will be able to find critical message content rapidly and with full, demonstrable records of every email transaction suitable for audit requirements.

### No database dependency

Archive One has embedded data management technology and does not require the use of an external database (such as SQL Server) therefore reducing costs and complexity. This allows incredible simplicity in terms of administration, implementation and ongoing management. It also reduces the administration, operation and maintenance costs while removing a potential point of failure.

### Ensure mailbox privacy & integrity

Email can contain important information about many subjects and people. While authorized staff should have rights to look for specific subjects, others should not be able to browse private and personal information, accidentally or otherwise.

Archive One can monitor and report on all the access rights and permission settings within an Exchange system. Both administrators and users can remain confident that messages stored in the email system have integrity and remain secure.



## Access archived email from anywhere

In a world where users are constantly on the move, the ability to be able to access and search all email including those that have been archived is essential. Whether on the corporate network, gaining access via internet cafes or mobile devices, users can have email anytime, anywhere.

Archive One meets this challenge head on and provides the most comprehensive of choices for accessing and searching archived email. Full support is provided for all major browsers including Internet Explorer, Firefox, Safari, and Blackberry as well as Windows mobile 5 and 6 devices. Archive One allows laptop users access to archived email even when no access to the corporate network or internet is available.

## Availability

Archive One for Exchange supports Microsoft Exchange 2003 and 2007 and is available through C2C accredited resellers worldwide.

## About C2C

C2C offers automated data archiving and management for email, files and SharePoint content, optimizing performance, reducing storage management costs and minimizing risks associated with critical data - helping you to control your data before it controls you.

C2C and accredited resellers also offer:

- ▶ Professional Services from expert consultants with detailed experience implementing C2C solutions
- ▶ Training to give you full control over the operation, maintenance and evolution of your system
- ▶ Technical Support so you always have someone to talk to who understands your requirements

A Microsoft Gold Certified Partner, C2C is a privately held company established in 1992 with offices in Springfield & Westborough, MA, US and Reading, UK and an accredited reseller network that extends throughout the world.



### Americas:

1 Federal Street, Springfield,  
MA 01105-1199, USA  
Tel: 508-870-2205  
Fax: 413-739-4980

### Europe & RoW:

6 Richfield Place, Reading,  
Berkshire, RG1 8EQ, UK  
Tel: +44 (0)118 951 1211  
Fax: +44 (0)118 951 1111

Email: [info@c2c.com](mailto:info@c2c.com)  
Website: [www.c2c.com](http://www.c2c.com)